

DEAR VISITORS,
WELCOME TO THE HESSISCHES LANDESMUSEUM DARMSTADT.

The floor plans are intended to help you find your way around our house. A selection of objects that you should not miss during your visit to the HLMD can be found on the back. These highlights are numbered and can be located with the help of the corresponding numbers on the floor plans.

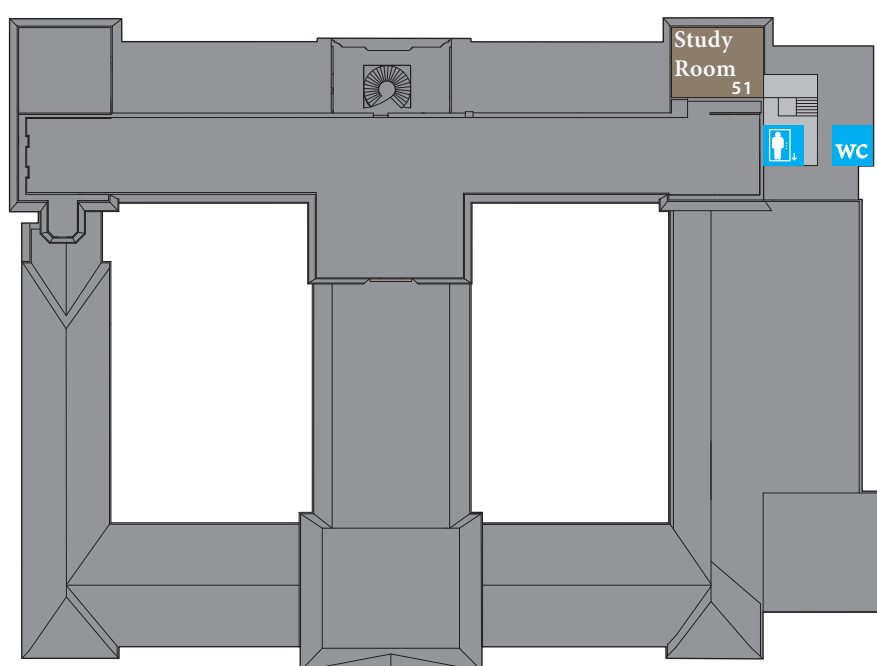
Thanks to our innovative QR code technology you can obtain further information on the works by entering the object number or scanning the QR codes located nearby. You can use your own terminal device (Smartphone, Tablet) or borrow a loan unit at our information desk.

We hope you enjoy discovering the museum and its works and wish you a pleasant visit!
Sincerely

Your Hessisches Landesmuseum Darmstadt

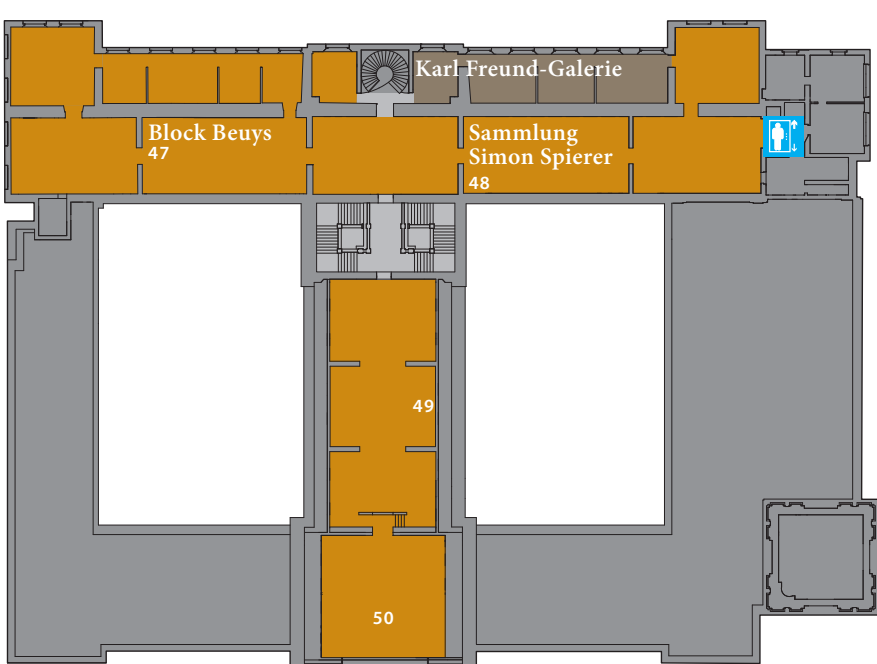
3

-  Lift, accessible
-  non-accessible toilet
-  partially barrier-free toilet
-  accessible toilet
-  Changing table
- 02-51 Highlights (on the back)



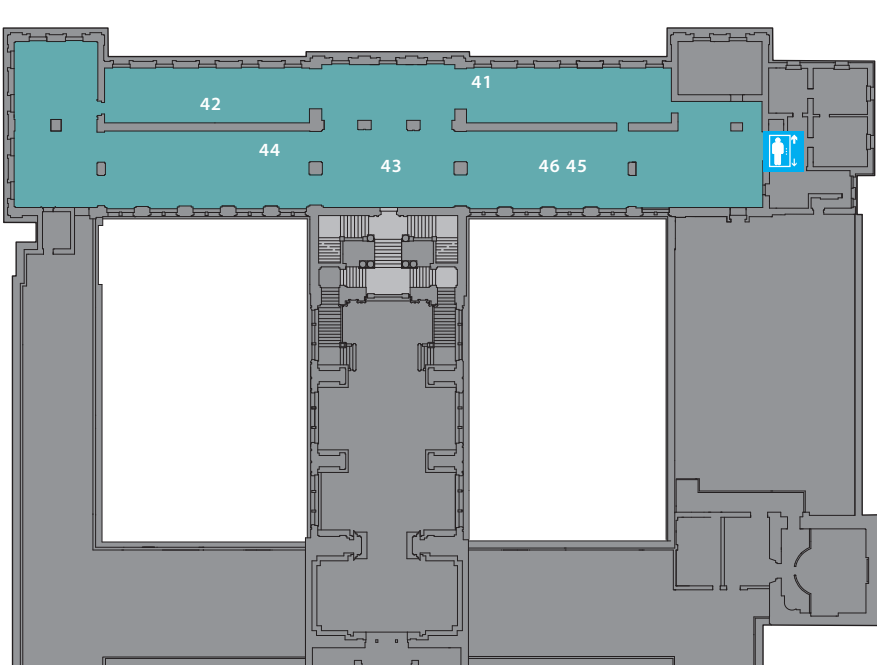
Graphische Sammlung

2



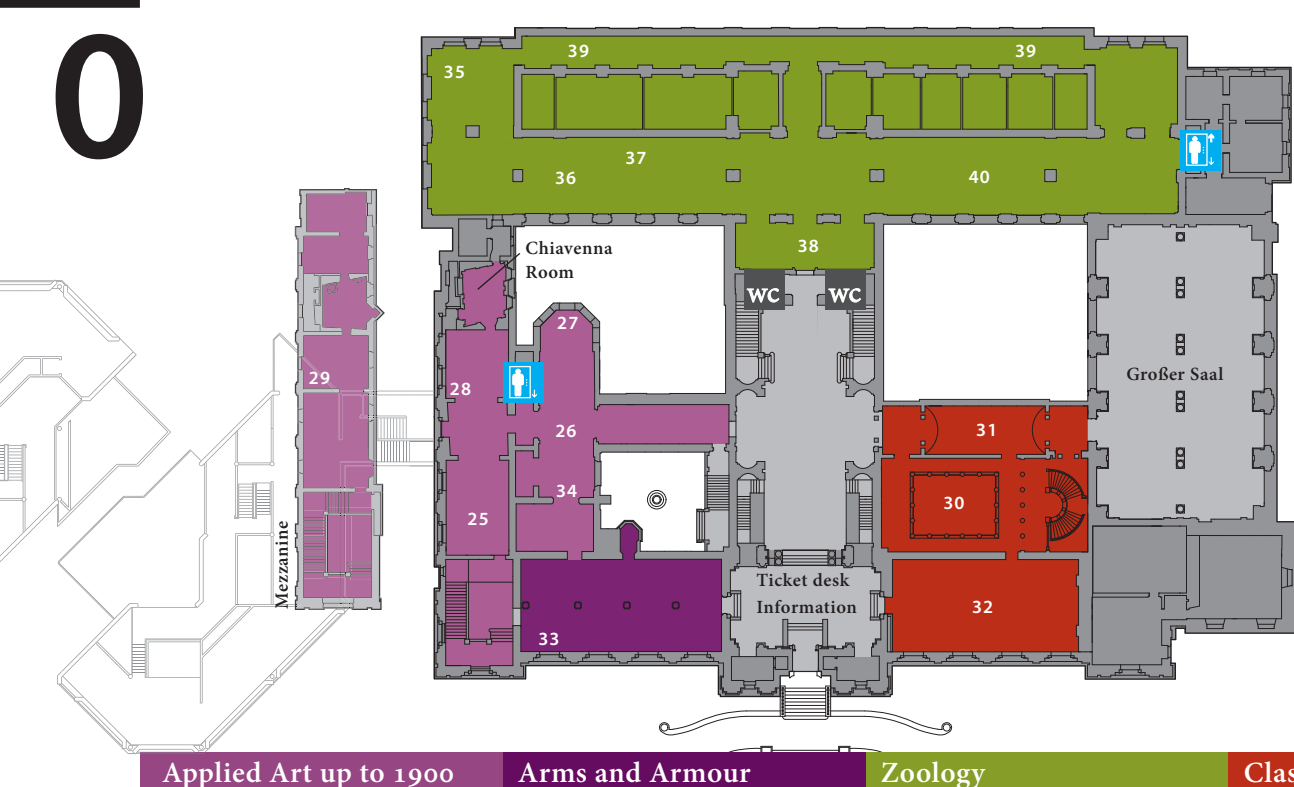
Art after 1945 Karl Freund-Galerie

1



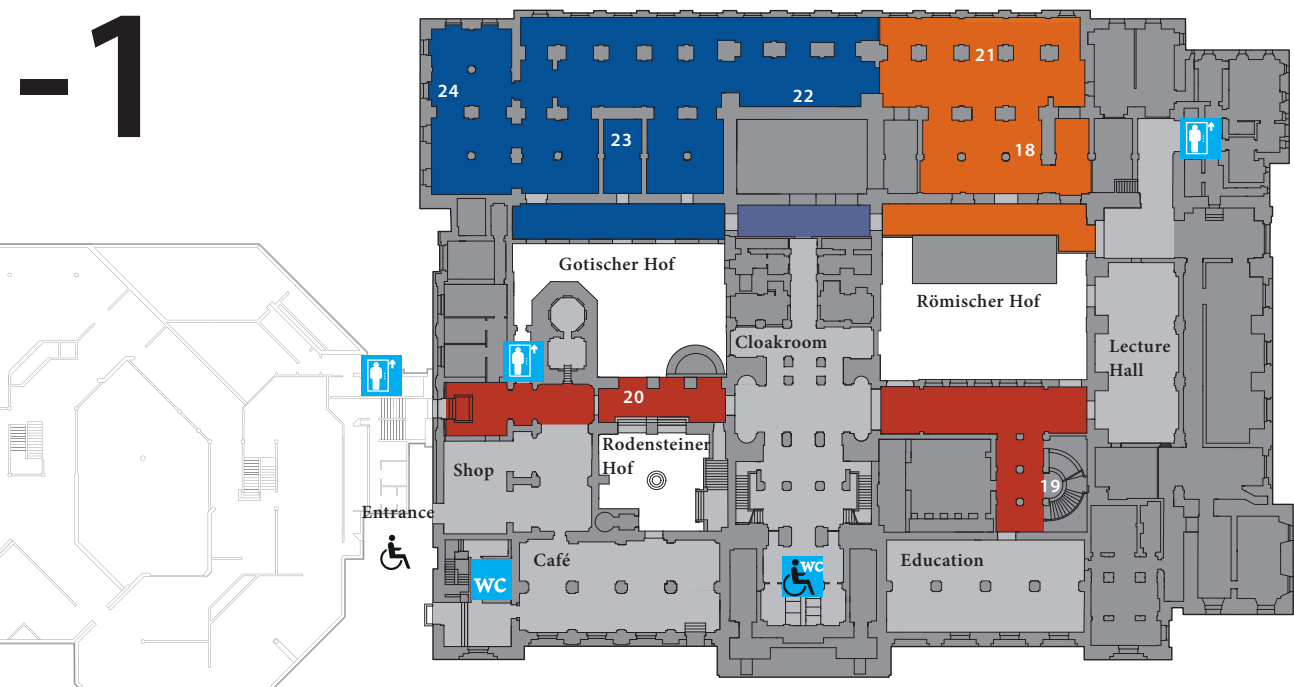
Earth and Life History

0



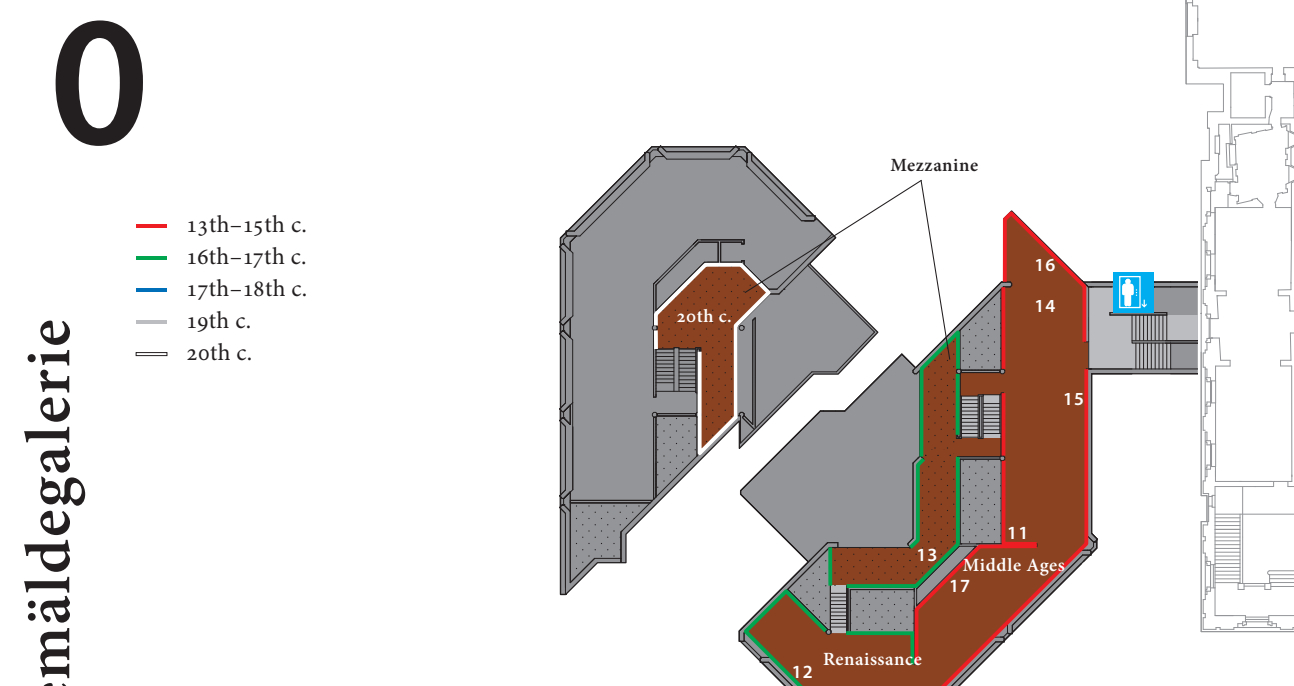
Applied Art up to 1900 Arms and Armour Zoology Classical Antiquity

-1



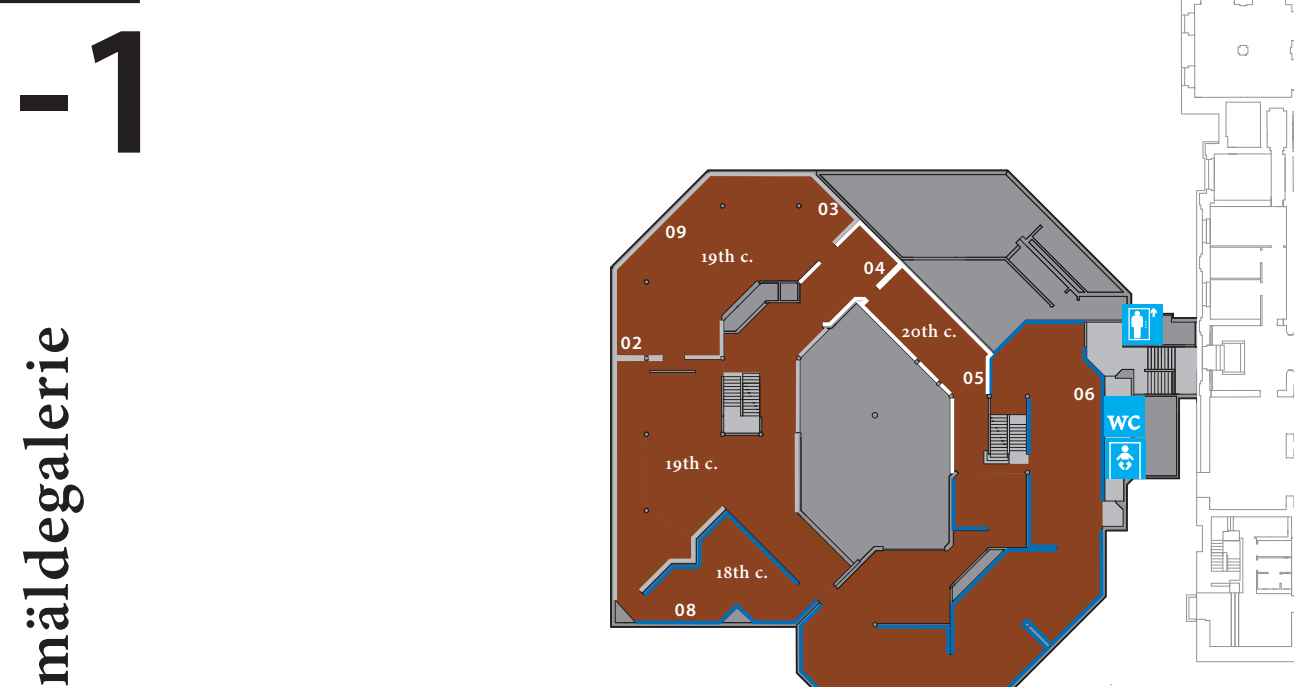
Art Nouveau Classical Antiquity Pre- and Early History Egyptian Collection

0



Painting 13th-17th century

1



Painting 17th-20th century

Gemäldegalerie

Gemäldegalerie

- 13th-15th c.
- 16th-17th c.
- 17th-18th c.
- 19th c.
- 20th c.